



DRACAN VILLAGE

BURTON-UPON-TRENT



SUSTAINABLE TRAVEL PACK



TRAVEL PACK?

A Travel Pack provides information to help you plan your daily journeys without the need to travel by car.

The Travel Pack helps to encourage you to travel by more sustainable means, and provides you with information you may need.

Our aim is to reduce single occupancy car trips with your help over a 12-year period!

This Travel Pack is available in other formats upon request. Contact TPC@roddersleask.co.uk for more information.



COUNTRYSIDE
Places People Love



DAVID WILSON HOMES
WHERE QUALITY LIVES

CONTENTS

Welcome...	3
Jack Lindsay - Your Travel Plan Co-ordinator	4
Drakelow-go. Your one-stop-shop for sustainable travel!	5
Journey Planning	6
Local Council Initiatives	7
Walking	8
Cycling	10
Local Buses	12
Train	14
Taxi	17
Car Sharing - Kinto Join	18
What next for Dracan Village?	20
Helpful Links	22



WELCOME...

Travel Plan

One of the reasons your development was granted planning permission is because your developer has committed to delivering a sustainable development.

Part of this commitment involves this Resident Travel Plan, which is focused on encouraging sustainable travel such as walking, cycling, car sharing and public transport. We hope you will find this useful and that it helps you explore your local area and the great benefits it has to offer!

Monitoring our Success

Every year you will be asked to complete a travel survey questionnaire so that we can measure the success of the Travel Plan. There will be a **£50 Amazon voucher** prize draw for all those who complete the survey.

Our aim, with your help, is:

- to achieve a 30% reduction in single occupancy car trips; and
- to reduce the number of car trips per household; over a 12 year period.

This will provide a range of benefits to the community including; a safer and cleaner environment, reduced congestion, improved health and potential financial savings!

There's an easier way from A to B!

This Travel Pack provides information to help you plan your day to day journeys. This booklet has a range of travel information we hope will encourage you to consider other ways to travel than by car.

We understand that sometimes there is no alternative to driving. However, we encourage you to consider different ways to travel when possible and this pack provides you with the starting point to think about your journey habits.

YOUR TRAVEL PLAN CO-ORDINATOR



Jack Lindsay: Your Travel Plan Coordinator

'Thankyou for taking the time to read this Sustainable Travel Pack. We are very much looking forward to engaging with residents at Dracan Village, helping to develop a sustainable community over the next decade.'

You'll see me and my colleagues around the site from time to time, so please do not hesitate to approach us if you have any sustainable travel questions.

Please do also check out the Drakelow-go website for all things sustainable Travel, where we will advertise sustainable travel events, sustainable travel discounts available for residents and much more!

Happy sustainable travelling!

DRAKELOW-GO.CO.UK

What is Drakelow Go?

Drakelow-go.co.uk is a website that has been created to cater to all your sustainable travel needs. A map of the amenities in your area, bus times or a collection of newsletters and surveys, everything you need is at your fingertips.

There are dedicated sections to each mode of sustainable travel, such as cycling and public transport. These sections will provide you with relevant and helpful information so you can travel sustainably in your local area.

Scan the QR code or visit:
www.Drakelow-Go.co.uk



JOURNEY PLANNING

Recommended Travel App

As well as your standard routing mapping services such as Google & Apple maps, Traveline.info provides a great multi-modal journey planning service that you should check out. Scan the below QR code to learn more.



Bus

BusChecker is a free app which displays accurate bus stop times, so you know when to leave your house. It also tells you how busy the bus will be, so no more running to the bus stop to find its full!

<https://www.buschecker.com/>

Additionally, derbysbus.info provides you with timetables and route maps for the services in the Derbyshire area.



Cycling

CycleStreets is a great interactive online tool which allows you to plan your cycle journey from start to finish, and it includes National Cycle Routes.

It provides you with the quickest, quietest and balanced routes based on a speed that the user inputs.

<https://www.cyclestreets.net/>



Train

Trainline is a great tool to find information on current train travel, which tells you the average journey time, the number of changes and the trains per day.

<https://www.thetrainline.com/>

LOCAL COUNCIL INITIATIVES

Derbyshire County Council have initiatives to improve your access to sustainable travel options, with information presented on their 'Sustainable travel and smarter choices' webpage.



Ever heard of the Derbyshire Wayfarer? Its a ticket that offers unlimited bus and train travel within Derbyshire for a whole day!

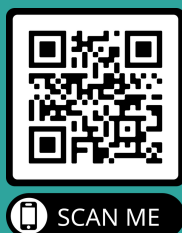


Drakelow sits on the border of Derbyshire and Staffordshire, meaning you get access to twice the number of sustainable travel initiatives!

For opportunities and activities that encourage ways to move more in the Derbyshire area, visit makingourmove.org.uk



Staffordshire county council have a website page summarising your sustainable travel options in the local area. The QR code links you to this page.



A key drive in the area is 'Air Aware'. You can find more information by searching for #airawarestaffs. Did you know that air pollution caused almost 390 deaths last year in Staffordshire? See how you can do your bit by leaving your car at home and travelling sustainably.



OUT AND ABOUT ON FOOT



Fit exercise into your daily routine by walking or cycling for all, or part of your journey.

Walking is a great way to boost your health, fitness and well being. It is recommended that the average adult should do 30 minutes of exercise, 5 times per week. Walking to work, the shops or school is an easy way to achieve this target.

Walking there and back could be good for your bank balance and your heart. Walking is also a cheaper alternative to a monthly gym membership!

Local walking groups can be found at:

<https://www.ramblers.org.uk/>



Additionally, the All Trails app provides you with a range of local walks logged by local walkers.



- Walking benefits include:
- Lowering your risk of heart disease by 25%
- Managing your stress and weight
- Improve your mood
- Save money on fuel!

YOUR LOCAL AREA

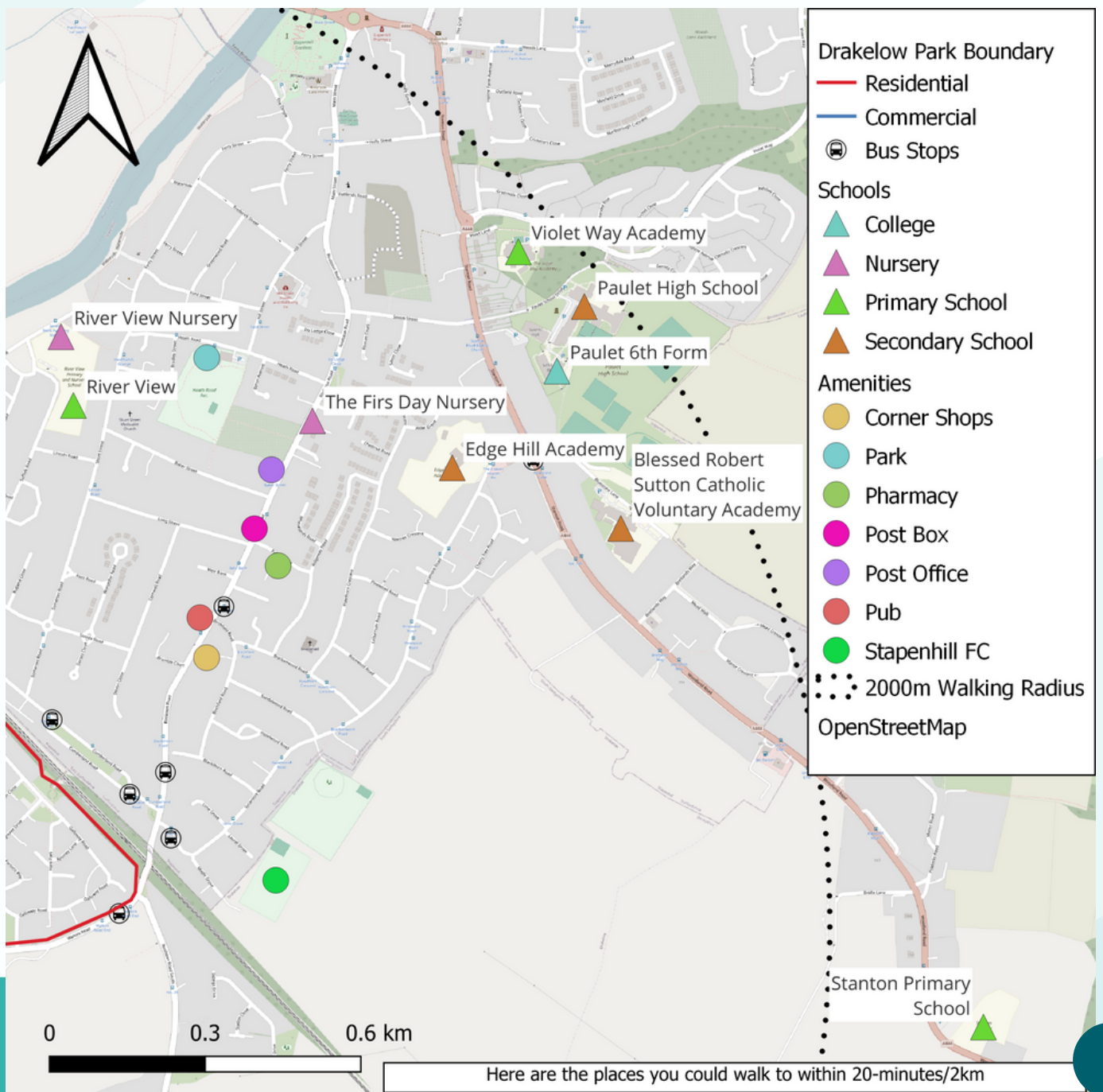
The map provides you with a snapshot of local amenities located within a short walking distance of your home.

Derbyshire County Council's 'walking for everyone' page provides a useful summary of walking information throughout the region.

SCAN ME



The NHS Change4life website is full of ideas about how to fit being active into your lifestyle!



ON YOUR BIKE

It is often quicker to cycle short distances than travel by car, particularly during the morning and evening rush hours.

Nearly a quarter of all car trips are under two miles (3km), a distance that can be cycled in 10 minutes.



E-BIKES!

The use of e-bikes has greatly increased over the past few years. E-bikes provide users an easier way to cycle than a traditional bike. There are a long list of benefits, which include:

- Less stress on the heart
- Easier to climb hills
- Faster riding
- They're eco-friendly
- You can save money!

IF YOU DON'T OWN A BIKE...

Ask your employer if they operate a cycle to work scheme. This allows you to loan cycles and cycle safety equipment as a tax free benefit!

We work with local cycling shops, so if any discounts to buy yourself a bike become available we'll let you know.

Best e-bikes of 2022



JOIN THE GANG...



The world famous Derby & Burton Cycle Touring Club organise fun rides in your area.

Go to: <http://ctcdab.uk/>



CYCLING OPTIONS

The map below provides you with a snapshot of local centres and employment areas all within a reasonable 5km cycle from your home. To view Derbyshire and Staffordshire cycle maps scan the following QR codes.

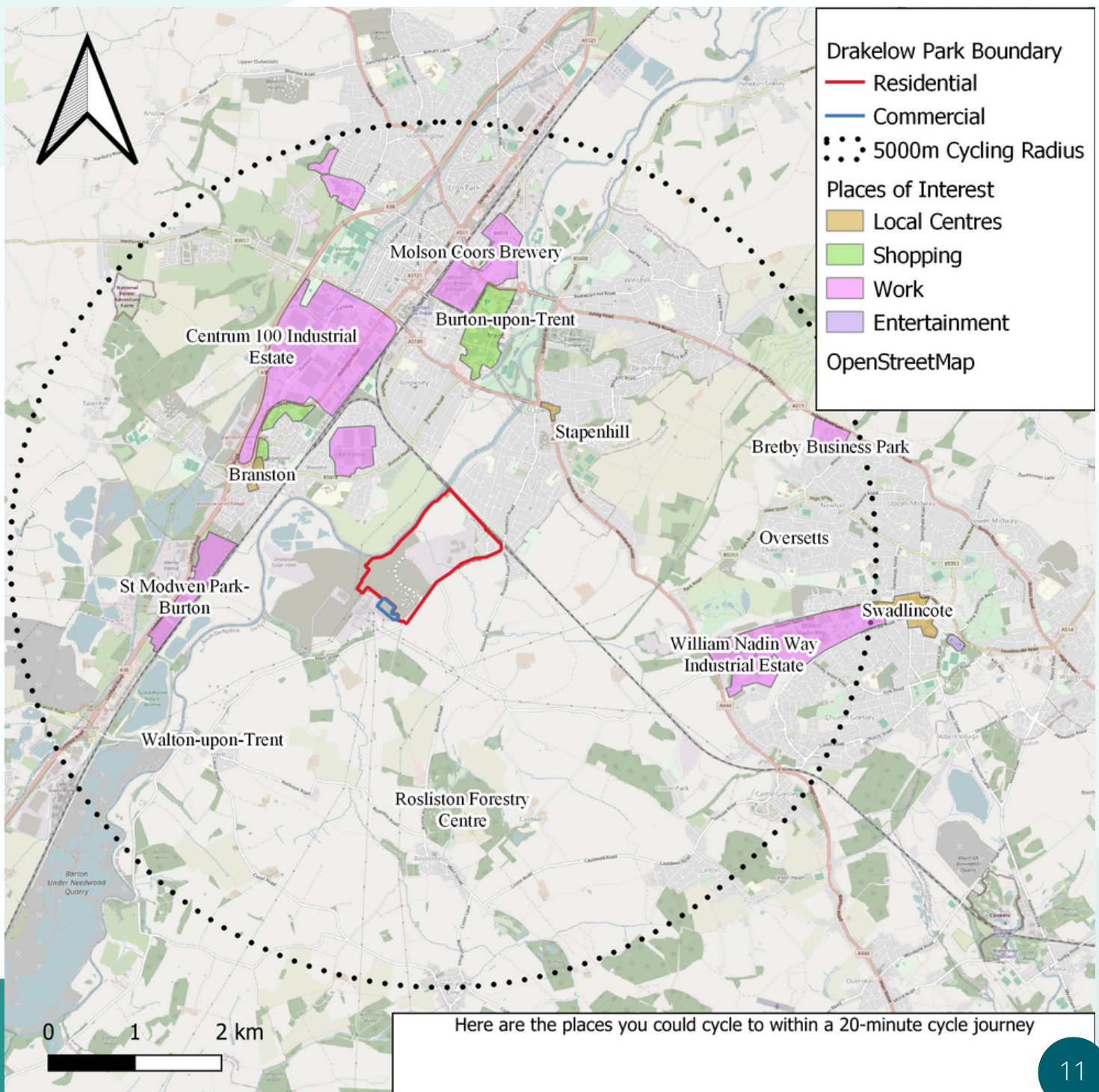
Other useful cycle related websites:

sustrans.org - details of the national cycle network.

lovetoride.net - for cycling rewards and incentives

bikeweek.org.uk - national cycling focus week!

East
Staffordshire Derbyshire



YOUR LOCAL BUSES

Save money on fuel by catching your local bus!

Avoid the frantic parking space search, relax on the bus and let someone else drive you there!

Below is a weekday timetable for your local buses (correct as of 13/02/24).

Bus Service	Bus Provider	Bus Stop	Route	Weekday Frequency
2	Midlands Classic	Maple Road / Cumberland Road	Burton to Edge Hill	Every 30 mins Between 05:39 - 18:04
4	Midlands Classic	Bluestone Ln	Burton to Swadlincote	Hourly Between 07:55 - 17:13
21	Midlands Classic	Weir Bank	Burton to Swadlincote	Every 30 mins Between 06:17 - 18:24
22	Midlands Classic	Walton Road End	Burton to Swadlincote	Every 2 Hours Between 10:25 - 18:25

As your new estate is built, other bus services will become available. We will let you know when this happens. There will be taster bus tickets on offer in future too!

For up to date timetables, location of bus stops, and information on the proposed bus service, visit:

drakelow-go.co.uk

Ticket savings can be found on the Midlands Classic website.

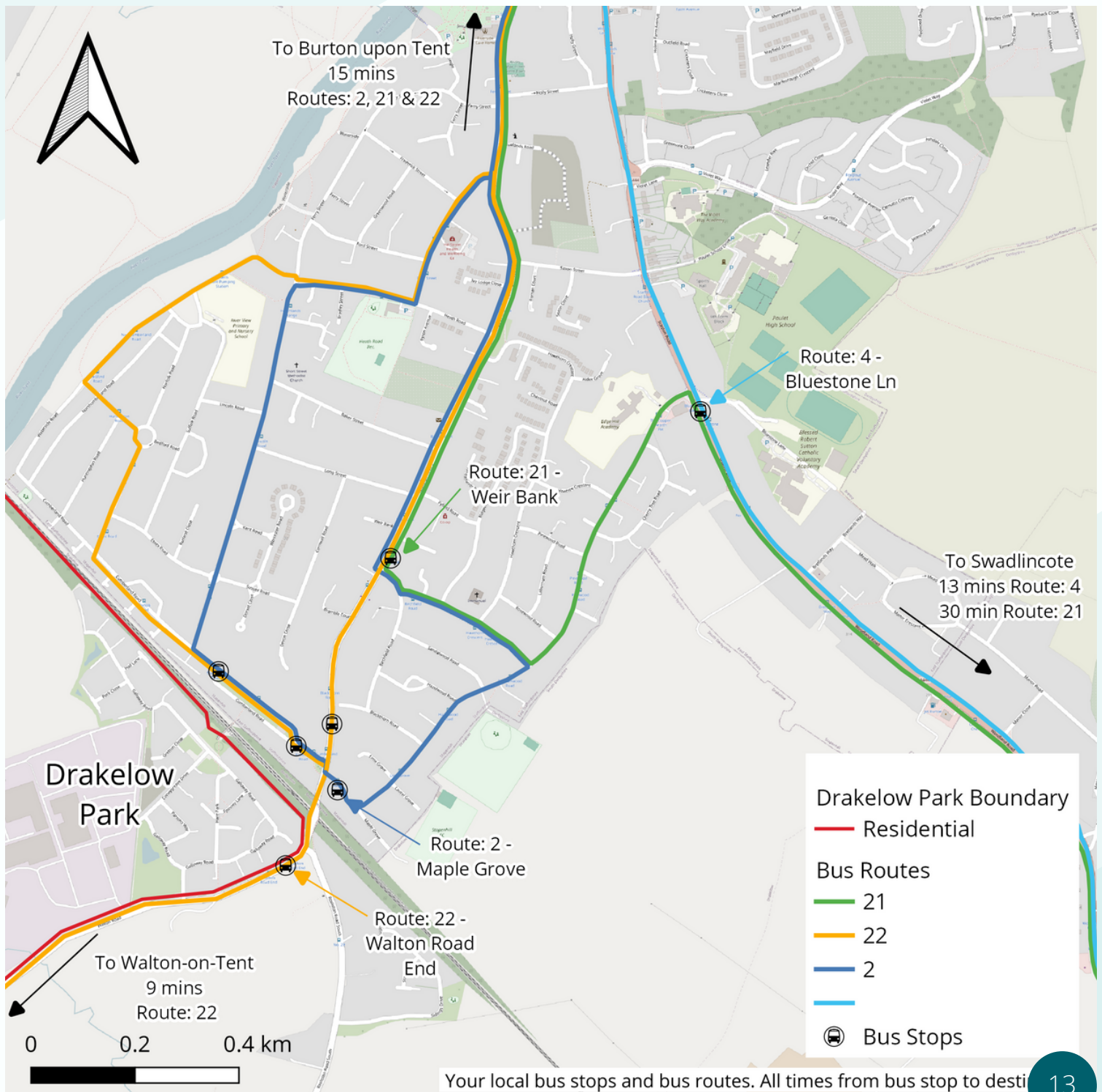
<https://www.midlandclassic.com/fares-and-tickets/>



BUS ROUTES



The map below illustrates your local bus stops, services and bus times to and from Burton, Swadlincote and Walton (there will be a service routing through the site to and from Burton in the not too distant future!)



Your local bus stops and bus routes. All times from bus stop to destination

CATCH THE TRAIN



Burton-upon-Trent Station

Choosing to travel by train provides you with a fast and efficient method of travel. You reach your destination without the need to drive, so you can sit back and relax.

Your nearest train station is Burton. Please scan the QR code below for more information at Crosscountry's website!



To view Crosscountry's train map, simply search for 'Crosscountry route map' or scan the QR code to the right.



What other method of transport could allow for you to have a work meeting, or catch up on some sleep? The train allows for all things business and leisure.



You could head to these locations by train

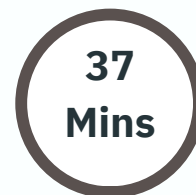
Derby



Birmingham New Street



Nottingham





YOU DON'T NEED TO DRIVE TO THE STATION!

The train station is only 5km away from your home, and for those keen cyclist, only a 14-minute cycle!

There is car parking provided at the train station, but spaces are extremely limited. However, there are 38 cycle parking spaces available at the station, with CCTV in the storage area operating 24/7.

Visit the CrossCountry Trains website to reserve yourself a bicycle space on the train. Scan the QR code to learn more!

SCAN ME



Directions to station

Your Home



Burton Station



OpenStreetMap



TAXI

IF YOU REALLY NEED TO, HAILING A CAB HAS NEVER BEEN EASIER!

Taxis can offer you a good option for your journeys, they are convenient, reduce worries about directions and cut down your parking time.

A taxi could be a useful option to Burton Train station



The following taxi companies operate in your local area:

NEW STREET TAXIS

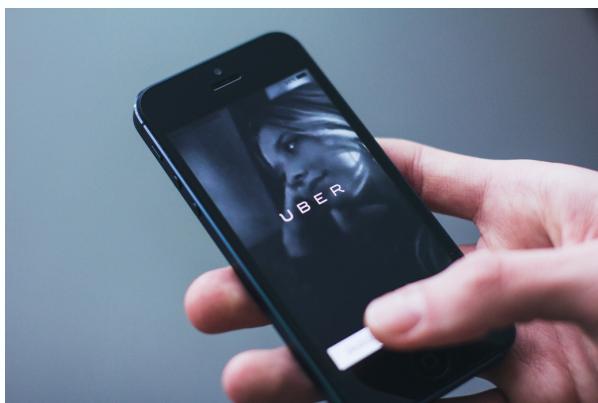
Tel: 01283 535353

STAPENHILL TAXIS

Tel: 01283 544444

GOLD STAR TAXIS

Tel: 07518 518875



Ridesharing

If you don't fancy calling a taxi company to organise your transport, why not use one of the many ridesharing apps instead?

CAR SHARING

Doing the same journey as someone else? Why not car share?

Car sharing provides you with a way to save money and reduce your time driving by helping the environment.

You can meet new people on your commute to your destination and create new connections.

There are free car sharing schemes which you can access online through your phone or computer. These are more formal car sharing companies who help to organise you with someone to share your journey with. See details on Derbyshire's new partnership with carpooling service Kinto Join on the next page



Staying safe during car sharing.

Following some simple guidelines will help to keep you safe when meeting your lift partner(s) for the first time.

- Agree to meet at an open and public space, for example, outside a shop
- Agree to meet near public transport links in case you decide you don't feel comfortable
- Ask for ID when meeting them to ensure your safety
- Ask for the model and colour of the car before the lift
- Let someone you trust know that you're car sharing and the details of your journey

If everything goes well, then you can sit back and relax, as well as save money as someone else does the driving for you!

CAR SHARING KINTO JOIN!



Derbyshire County Council has partnered with KINTO Join to provide an innovative journey sharing platform that helps community members have a better, more sustainable commute.

Choose the communities with destinations that are of interest to you and start saving time and money while contributing to less traffic congestion and better air quality in your community.

All communities are completely free to join and open to anyone who lives or works in Derbyshire to use. Register now and start connecting with other members on your route. Simply scan the below QR code to find out more!



WHAT NEXT FOR YOUR ESTATE?

As the new community grows, there will be a number of exciting initiatives for you to make use of, all with the aim of encouraging sustainable travel.

Here's a sample of the things to come:



LOCAL CENTRE

Dracan village will be home to a local centre, to be established in a few years time!



NEW BUS SERVICE

Countryside are in discussions with a local bus operator to route a bus through Dracan Village, providing an improved bus service to / from Burton!



CAR CLUB

Countryside are considering the merits of establishing a car club, where you will have the opportunity to hire a dedicated Dracan Village vehicle!



SUSTAINABLE TRAVEL EVENTS

A number of events will be led by your Travel Plan Co-ordinator to encourage the take up of sustainable travel! More info to come.

DRAKELOW PARK MASTERPLAN



Key

- Site Boundary (106.8 ha)
- Residential Development (66.69 ha)
Total exc. retirement = 2168 units
CPPLC - 46.1 ha (circa 1557 units)
- DWH - 8.8 ha (193 units)
- Allen Land - 11.79 ha (circa 418 units)
- Formal Green Space/Play (7.67 ha)
- Informal Woodland (20.5 ha)
- Water Features and SUDs (4.75 ha)
- Primary Tree Lined Boulevard
- Private Drive
- Listed Building or Structure
- ▲ Existing Cottage to be Retained
- Existing Boat Club to be Retained
- Retirement Village (0.6 ha)
Circa 70 units
- Primary School and Sports Pitch (2 ha)
- Employment Land (2.5 ha)
Circa 140,500sqm unit
- Flexible non-residential use (0.25ha)
- Existing PROW
- Local Centre (1.14 ha)
- * Access into EON Land
- Proposed woodland walks
- Proposed 3m Greenway (indicative only), linking Staffordshire boundary with EON land

HELPFUL LINKS AND CONTACTS

Below provides you with a list of useful sustainable travel information described earlier in this Travel Pack. Happy travelling!

[Drakelow-go.co.uk](https://www.drakelow-go.co.uk)

The one stop shop for sustainable travel information

Journey Planning

Email : TPC@rodgersleask.co.uk for bespoke advice

Train Services

<https://www.eastmidlandsrailway.co.uk/trains-stations/at-the-station/station-facilities/but>

<https://www.nationalrail.co.uk/>

Council Websites

<https://www.derbyshire.gov.uk/home.aspx>

<https://www.staffordshire.gov.uk/Homepage.aspx>

Bus Services

<https://www.traveline.info/> <https://derbysbus.info/>

<https://bustimes.org/> <https://www.midlandclassic.com/>

Car Sharing

<https://www.kinto-join.co.uk/>

Bike Travel

<https://www.cyclestreets.net/>

Clean Air Initiative - Sustainable Travel Options

<https://www.staffordshire.gov.uk/DoingOurBit/Get-Inspired/Clean-green-and-safe/Air-aware/Air-aware.aspx>

THANK YOU!

Thankyou for reading this Travel Pack. We hope you found it useful. Don't forget to check out the Drakelow-go.co.uk website for updated information on offers available to you, and upcoming events!

Happy travelling!





DRACAN VILLAGE

BURTON-UPON-TRENT



COUNTRYSIDE
Places People Love



DAVID WILSON HOMES
WHERE QUALITY LIVES

RLRE
Consulting Engineers

All maps are produced from QGIS using Open Streetmap data. CC-BY-SA

Bus times subject to change for latest information see bus provider websites. All info correct 13/02/24